

Tanuki

2026

Full Product Guide

+61 7 4639 2009



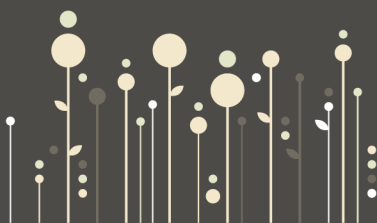
sales@tanuki.com.au



tanuki.com.au



27 Heinemann Road, Wellcamp QLD



	Product	Description	Analysis/ Formulation	Pack Size	Pack Type	No./ Pallet	Supplier
Copper Fungicide	NORDOX 750WG	Wettable granules that mix, pour and handle like a liquid for ease of use. Micronised particle size provides superior retention, disease control and persistence. Almost insoluble at pH 7.0 for excellent crop safety. Highly concentrated formulation delivers very economical application rates.	Copper (Cu) 75% as cuprous oxide	15 kg	Pail	64	NORDOX
Slow Release Trace Elements	Verno Copper	Water-dispersible granules that mix and handle easily for simple, accurate application. Micronised particles adhere strongly to plant surfaces to form a slow-release reservoir of micronutrients. Improves tissue nutrient levels, plant vigour and overall crop health. Compatible with most crop protection and fertiliser products for foliar, pop-up or soil application.	Copper (Cu) 75% as cuprous oxide	15 kg	Pail	64	NORDOX
	Verno Copper + Zinc		Copper (Cu) 30% as cuprous oxide Zinc (Zn) 30% as zinc oxide	15 kg	Pail	64	NORDOX
	Verno Manganese		Manganese (Mn) 34% as manganese carbonate	15 kg	Pail	64	NORDOX
				15 kg	Bag*	64	
	Verno Trio		Copper (Cu) 15% as cuprous oxide Manganese (Mn) 17% as manganese carbonate Zinc (Zn) 15% as zinc oxide	15 kg	Pail	64	NORDOX
Verno Zinc	Zinc (Zn) 60% as zinc oxide	15 kg	Pail	64	NORDOX		
		15 kg	Bag*	64			

*Available from Perth warehouse as FULL pallet order ONLY.



Product	Description	Analysis/ Formulation	Pack Size	Pack Type	No./ Pallet	Supplier	
Chelates	Chaufer®	A high-purity, microgranular iron chelate for reliable iron supply in alkaline and calcareous soils. Chelated with ortho-ortho EDDHA, Chaufer provides strong iron stability under high pH conditions and is suitable for soil application and liquid feed systems, including hydroponic and soilless growing media.	Iron (Fe) 6.0% (5.0% chelated by ortho-ortho EDDHA) Solubility ≈ 30 g/L	1 kg	Pail, 6/Box	36	BASF
				20 kg	Box		
	Libfer® SP	A high-standard, microgranular iron chelate providing effective iron nutrition in alkaline and calcareous soils. Chelated with EDDHA, Libfer SP is used where soil pH limits iron availability and is suitable for soil application and liquid feed solutions, including hydroponic and soilless systems.	Iron (Fe) 6.0% (4.0% chelated by ortho-ortho EDDHA) Solubility ≈ 30 g/L	1 kg	Pail, 6/Box	36	BASF
				20 kg	Box		
Ultrasol® micro FeD12	A high-analysis, water-soluble iron chelate supplying plant-available iron in acid to neutral soils. Chelated with DTPA, Ultrasol micro FeD12 is suitable for soil, foliar and liquid feed applications where iron availability is required up to pH 7.5.	Iron (Fe) 11.6% fully chelated by DTPA Solubility ≈ 110 g/L	15 kg	Pail	48	SQM	
Librel® Fe-LO	A water-soluble iron chelate primarily used for foliar application and in acidic soils. Chelated with EDTA, Librel Fe-LO is suitable for iron supply where soil pH is below 6.0 and for use in liquid feed, hydroponic and other soilless growing systems.	Iron (Fe) 13.2% fully chelated by EDTA Solubility ≈ 45 g/L	2 kg	Pail, 6/Box	64	BASF	
			15 kg	Pail			



Product	Description	Analysis/ Formulation	Pack Size	Pack Type	No./ Pallet	Supplier	
Chelates	Librel® BMX	A microgranular blend of EDTA-chelated micronutrients supplying iron, copper, manganese and zinc, with boron and molybdenum. Librel BMX is used to correct multiple micronutrient deficiencies in a single application and has good solubility for reliable use in foliar application and liquid feed solutions.	Iron (Fe) 3.35% chelated by EDTA Copper (Cu) 1.7% chelated by EDTA Manganese (Mn) 1.7% chelated by EDTA Boron (B) 0.875% as sodium borate Molybdenum (Mo) 0.023% as sodium molybdate Zinc (Zn) 0.6% chelated by EDTA Solubility ≈ 150 g/L	1 kg	Pail, 6/Box		BASF
				10 kg	Pail	48	
	Librel® Ca	A water-soluble calcium chelate formulated to support calcium nutrition where soil availability or uptake is limiting. Chelated to improve calcium mobility and plant availability, Librel Ca is suitable for foliar and soil application and for use in liquid feed solutions, including hydroponic and soilless growing systems.	Calcium (Ca) 9.5% (9.0% chelated by EDTA) Solubility ≈ 350 g/L	1.5 kg	Pail, 6/Box		BASF
		12.5 kg	Pail	48			
Librel® Cu	A microgranular copper chelate providing plant-available copper for the correction of copper deficiency. Chelated with EDTA, Librel Cu is suitable for foliar and soil application and has good solubility for reliable use in liquid feed, hydroponic and soilless systems.	Copper (Cu) 14% (13.3% chelated by EDTA) Solubility ≈ 475 g/L	1.5 kg	Pail, 6/Box		BASF	
			15 kg	Pail	48		



Product	Description	Analysis/ Formulation	Pack Size	Pack Type	No./ Pallet	Supplier	
Chelates	Librel® Mg	A water-soluble magnesium chelate used to correct magnesium deficiency in crops. Chelated with EDTA, Librel Mg is suitable for foliar and soil application and for use in liquid feed solutions where consistent magnesium supply is required.	Magnesium (Mg) 5.5% fully chelated by EDTA Solubility ≈ 300 g/L	1 kg	Pail, 6/Box	48	BASF
				12.5 kg	Pail		
	Librel® Mn	A fine-granule manganese chelate supplying water-soluble manganese for effective correction of manganese deficiency. Chelated with EDTA, Librel Mn 13 is recommended for foliar application and has good solubility for reliable use in liquid feed, hydroponic and soilless growing systems.	Manganese (Mn) 13% fully chelated by EDTA Solubility ≈ 470 g/L	2 kg	Pail, 6/Box	48	BASF
				15 kg	Pail		
Librel® Zn	A microgranular zinc chelate providing readily available zinc for the correction of zinc deficiency. Chelated with EDTA, Librel Zn is suitable for foliar and soil application and has good solubility for reliable use in liquid feed, hydroponic and soilless growing systems.	Zinc (Zn) 14% (13.3% chelated by EDTA) Solubility ≈ 450 g/L	1.5 kg	Pail, 6/Box	48	BASF	
			15 kg	Pail			
			25 kg	Bag			
Kestrel Zinc	Liquid zinc chelate to support crop establishment and growth. Suitable for foliar, soil or aerial application and compatible with most pesticides and fertilisers.	Zinc (Zn) 9.0% as dipotassium EDTA Potassium (K) 9.0% as acetate	20 L	Drum	32	Tanuki	
			1000 L	IBC			



	Product	Description	Analysis/ Formulation	Pack Size	Pack Type	No./ Pallet	Supplier
Liquid Fertiliser	Triumph	A multinutrient liquid fertiliser to improve plant vigour. Can be used as a foliar or soil applied fertiliser in field and tree crops.	Nitrogen (N) 8.0% as urea Phosphorus (P) 10% Potassium (K) 21% as phosphate Boron (B) 0.50% as borate Zinc (Zn) 0.08% chelated by EDTA Iron (Fe) 0.08% chelated by EDTA Manganese (Mn) 0.06% chelated by EDTA Copper (Cu) 0.02% chelated by EDTA Molybdenum (Mo) 0.002% as molybdate	20 L	Drum	32	Tanuki
				1000 L	IBC		
Soil Enzymes	Lumen®	Concentrated liquid enzyme additive containing lipase and mannanase for use with liquid fertilisers or as a stand-alone soil treatment. Enhances nutrient release from organic matter and stimulates root development for improved soil and plant health. Compatible with most fertilisers and in-furrow treatments across pH 4.5-9.0.	Lipase >2500 µU/ml Mannanase >175 U/ml	1 L	Bottle		Elemental Enzymes



	Product	Description	Analysis/ Formulation	Pack Size	Pack Type	No./ Pallet	Supplier
Soil Enzymes	Lumen® Z	Liquid soil enzyme additive combining the lipase and mannanase system of Lumen® with a zinc chelate cofactor. Enhances nutrient release from organic matter while supplying highly available zinc to support early growth and root development. Compatible with most fertilisers and in-furrow or drip applications across pH 4.5–9.0.	Lipase >80 µU/mL Mannanase >5.6 U/mL Zinc (Zn) as Potassium EDTA 8.7% Potassium (K) as acetate 8%	10 L	Pail		Elemental Enzymes
				1000 L	IBC		
	Magno®	Granular enzyme additive containing phosphatase and mannanase for use with liquid or soluble fertilisers or as a stand-alone soil treatment. Enhances phosphate availability and root activity by converting organic phosphorus into plant-accessible forms. Compatible with most fertilisers and in-furrow applications across pH 5–9.0.	Phosphatase >250 mU/g Mannanase >1.25 kU/g	50 g	Pack		Elemental Enzymes
				150 g	Pack		
Nitrogen Stabilisers	Limus®	Liquid urease inhibitor formulation containing NBPT + NPPT for coating granular urea. Reduces nitrogen loss from volatilisation and improves nitrogen efficiency in fertiliser applications. Easy to apply and compatible with standard blending and application systems.	N-butylphosphorothioic triamide (NBPT) 30% N-propylphosphorothioic triamide (NPPT) 10%	1000 L	IBC		BASF



Product	Description	Analysis/ Formulation	Pack Size	Pack Type	No./ Pallet	Supplier	
Glaze Copper	Micronutrient coatings for granular fertilisers. Ensures uniform distribution and consistent nutrient availability through slow-release action in the fertiliser band.	Copper (Cu) 57.3 % as cuprous oxide	1875 kg	IBC		Tanuki	
Glaze Moly		Molybdenum (Mo) 10% as sodium molybdate	1000 kg	IBC		Tanuki	
Glaze Zinc		Zinc (Zn) 53.4% as zinc oxide	1875 kg	IBC		Tanuki	
Fertiliser Coatings	Glaze Anchor	Ready-to-use liquid coating to restore integrity and suppress dust in degraded fertiliser granules. Binds fine particles and strengthens granule structure for improved durability and flow. Compatible with other Glaze coatings, delivering long-term suppression and enhanced product quality.	Naturally occurring binding polymers	1000 kg	IBC		Southstar
	Glaze DS	Ready-to-use liquid coating for suppressing dust and improving handling of granular fertilisers. Applies evenly to stick and bind dust particles, forming a durable, low-dust granule surface. Easy to measure and apply, enhancing safety and flowability in fertiliser blending systems.	Naturally occurring binding polymers	1100 kg	IBC		Southstar

Customised formulations are available for selected products.
Please contact Tanuki to discuss your requirements.



Find us:
Tanuki Pty Ltd
27 Heinemann Road
Wellcamp QLD 4350



Contact us:
T +61 7 4639 2009
E sales@tanuki.com.au
tanuki.com.au